

### Benefits:

- Reliable meter modem for transparent communication via mobile networks
- GPRS support for:
  - dynamic IP addresses (IP telemetry)
  - fixed IP
- Flexible meter integration
- Short reading intervals
- Protection against unauthorized access
- Diverse applications possible thanks to integrated auxiliary voltage supply (e.g. for quantity transformers)
- Easy device configuration using the RS232 interface (local) or via telephone call (remote)
- International application thanks to quad-band GSM

### Key Features:

- Transparent communication via GSM and GPRS connections
- Meter interfaces: CL1, RS232, RS485
- Supports the IP-T protocol (E-DIN 43863-4)
- Supports fixed IP
- Integrated wide-range power supply for 100 – 230 VAC
- Auxiliary voltage supply
- Display for operating mode and GSM field strength via LED
- Sealable enclosure
- Call authorization with password protection
- Local parameterization via the RS232 interface or by remote by telephone
- Local firmware update via the RS232 interface



The ZDUE-GPRS-PLUS-VI from Dr. Neuhaus Telekommunikation enables location-independent remote data readouts for energy, water or gas meters via the GPRS network.

This technology makes it inexpensive to read out meters at very short intervals, whereby the GPRS connection is set up in the same way as the previous AT connection via the GSM network. The data collected at short, regular intervals can be used to calculate trends and thus optimize load or network management.

Thanks to the integrated auxiliary voltage supply, the ZDUE-GPRS-PLUS-VI is also able to provide such battery-operated devices as quantity transformers with power.

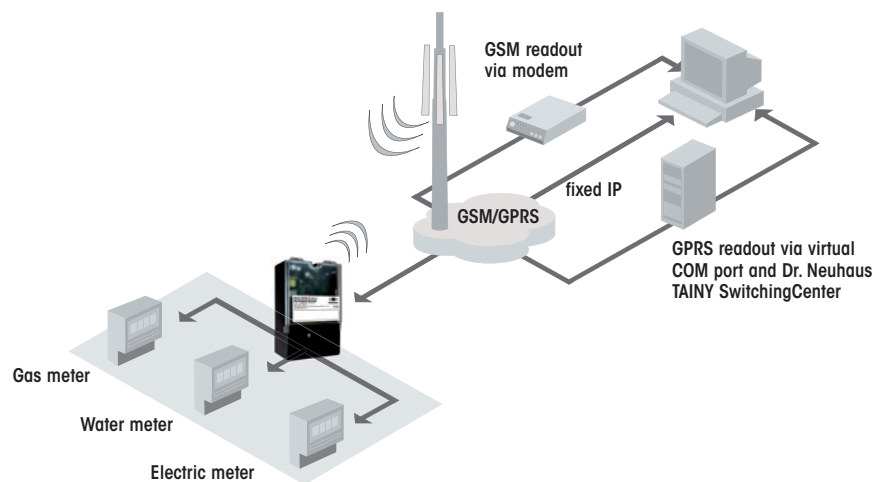
Equipped with a compact enclosure according to DIN 43857-5, the ZDUE-GPRS-PLUS-VI is designed to be mounted on a meter board or on the meter terminal cover.



## System Components

- ZDUE-GPRS-PLUS-VI
- Antenna
- SIM card (for GPRS operation using dynamic or fixed IP addresses)
- Communication software: TAINY SwitchingCenter
- Software modem control center: TAINY ComPortClient

## Topology



## Technical Data

### INTERFACE

<b>Meter interfaces</b>	CL1 – Interface as screw-type terminal acc. to DIN EN 62056-21: MODE A, C; Speed: up to 19,200 baud, half-duplex RS232 – Interface as RJ6/6: Signals: Rx, Tx, GND, DCD; Speed: up to 38,400 baud, full-duplex RS485 – 2-wire Interface as screw-type terminal: Signals: RT+, RT-; max. 32 transceivers; Speed: up to 19,200 baud, half-duplex Data format 7E1 (meter mode), 8N1 or 8E1; supports baud-rate switch acc. to DIN EN 62056-21 Mode C
<b>Configuration</b>	Basic configuration and expanded configuration acc. to DIN EN 62056-21 Mode C: locally via RS232 meter interface, remote by telephone call
<b>Power supply</b>	Input voltage for device: Un 100 – 230 VAC +/- 10% (integrated wide-range power supply), Fn 50 Hz; Un 60 – 100 VDC +/- 10%; 40 mA/120 mA
<b>Auxiliary power</b>	9 VDC / 100 mA

### RADIO

<b>Connection</b>	GSM data (CSD): Non-transparent; Modem type V.32, RLP acc. to GSM Rec. 4.22, ISDN Type V.110; GPRS data: Class 10; up to 2 uplinks / up to 4 downlinks, max. of 5 links; coding process: CS-1, CS-2, CS-3, CS-4
<b>Transmitting Power</b>	Quad-band (when using a quad-band enabled antenna); GSM 900 MHz: max. 2 watts, DCS 1800 MHz: max. 1 watt, GSM 850 MHz: 2 watts, PCS 1900 MHz: max. 1 watt
<b>Antenna Port</b>	Nominal impedance: 50 ohms; jack: SMA or FME

### CERTIFICATION

<b>Environmental Conditions</b>	Operation from -20 °C to +55 °C; +55 °C to +65 °C (derating); -25 °C to +85 °C (storage); Humidity 0-95 %, non-condensing
<b>Approvals</b>	CE conformity; – Telecommunications devices (1999/5/EC): EN301419-1, EN301511, Module with GCF certification – Electromagnetic compatibility (2004/108/EG): EN 55022 Class B, EN 55024: EN 61000-6-2, EN 61000-4-[2/3/4/5/6/11], EN 61036 – Electrical safety (2006/95/EWG): EN 50428

### MECHANICS

<b>Mechanics</b>	Enclosure: Standard enclosure for terminal cover mounting, three-point mounting acc. to DIN 43857-5, IP51, combustibility acc. to UL94-V0, lid for terminal box can be sealed; Dimensions: approx. 105 x 70 x 180 mm (L x W x H); Weight: approx. 350 g
------------------	---

### MISCELLANEOUS

<b>Accessories</b>	Various antennas, software
<b>Scope of Delivery</b>	Device; installation instructions
<b>Order Number</b>	ZDUE-GPRS-PLUS-VI, Part-No.: 820208 (with CL1 interface, SMA), No. 820215 (without CL1 interface, SMA), 820239 (with CL1 interface, FME)

Subject to technical modification. All data are based on manufacturer's specifications. No guarantee or liability for incorrect entries or omissions. All deliveries and services are provided by Dr. Neuhaus Telekommunikation GmbH on the basis of the "General Terms and Conditions" in the current version. All product names are trademarks of their respective owners. Dr. Neuhaus Telekommunikation GmbH 05/2013, Doc.-No. 8191AQ011 Rev. 1.2

