

Benefits:

- Reliable meter modem for transparent communication via mobile networks
- Flexible meter integration
- Very short read-out intervals
- Adapted for SIM Card with fixed IP address
- Protection against unauthorized access
- Broad range of applications with integrated power source, e.g. for quantity transformer
- Easy device configuration with RS232 interface (local) or via telephone call (remote)
- Can be used internationally with quad band GSM

Key Features:

- Transparent meter data reading with GSM- or GPRS connection
- Meter interfaces: CL1, RS232, RS485
- Integrated wide-area 100 to 230 VAC
- Auxiliary power source
- Display of operating data and GSM-signal strength via LED
- Sealed enclosure
- Call authorization with password protection
- Settings adjusted locally with RS232 interface or remotely by call up
- Firmware update locally via RS232 interface
- AT-command mode



The ZDUE-GSM-PLUS-V from Dr. Neuhaus Telekommunikation GmbH enables remote data reading from electricity, water or gas meters via GSM/GPRS networks.

The data stored in the meter (e.g. register and load profile) are transmitted using transparent data via different interfaces. Thanks to the transparent mode, it is also possible to read gas registration devices, etc. With the integrated auxiliary power source, the ZDUE-GSM-PLUS-V can also supply battery-operated devices as quantity transformers with power.

The device settings can be made either locally using the RS232 interface, as well as remotely by call up.

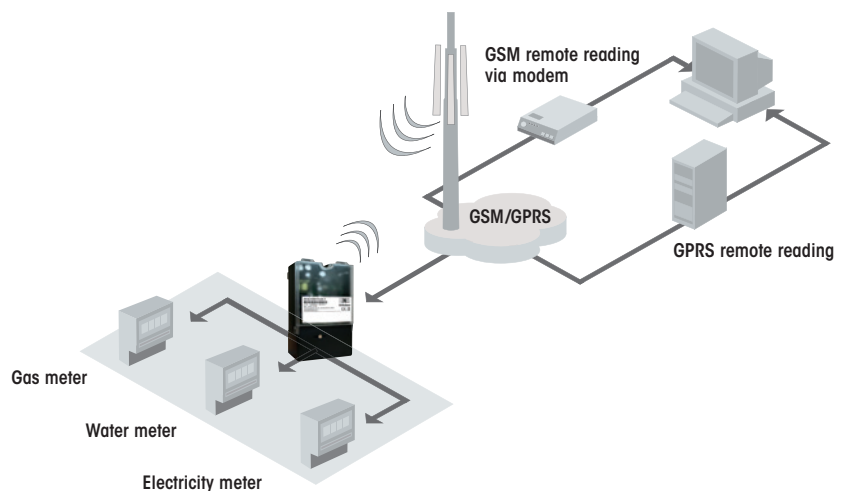
With its small and robust housing, the ZDUE-GSM-PLUS-V is DIN 43857-5-compliant and can be easily installed on a meter board or on the meter terminal cover.



System Components

- ZDUE-GSM-PLUS-V
- Antenna
- SIM Card (for GPRS operation with fixed IP address)

Topology



Technical Data

INTERFACES

Meter interfaces	CL1 – Interface as screw terminal compliant with DIN EN 62056-21: MODE A, C; Speed up to 19200 baud, half-duplex RS232 – Interface as RJ6/6; Signals: Rx, Tx, GND, DCD; Speed up to 38400 baud, full-duplex RS485 – Interface 2-wire as screw terminal; Signals: RT+, RT-; max. 32 transceivers; Speed up to 19200 baud, half-duplex Data format 7E1 (meter mode), 8N1 or 8E1; Supports baud-rate switch acc. to DIN EN 62056-21 Mode C
Configuration	Basic configuration and extended configuration acc. to DIN EN 62056-21 Mode C: locally via RS232 meter interface, remote via call in
Power Supply	Input voltage for device: Un 100 – 230 VAC +/- 10% (integrated wide-range power supply), Fn 50 Hz; Un 60 – 100 VDC +/- 10%; 40 mA/120 mA
Auxiliary power	9 VDC/100 mA

RADIO

Connection	GSM-Data (CSD); Non-Transparent; Modemtyp V.32, RLP according to GSM Rec. 4.22, ISDN Typ V.1110; GPRS data: class 10; up to 2 uplinks / up to 4 downlinks, max. 5 links; coding schemes: CS-1, CS-2, CS-3, CS-4
Transmitting Power	Quad band; GSM 900 MHz: max. 2 watts, DCS 1800 MHz: max. 1 watt, GSM 850 MHz: max. 2 watts, PCS 1900 MHz: max. 1 watt;
Antenna Port	Nominal impedance: 50 ohms; jack: SMA

APPROVALS

Environmental Conditions	Operation from -20 °C to +55 °C; +55 °C to +65 °C (derating); -25 °C to +85 °C (storage); Humidity 0-95 %, non-condensing
Approvals	CE compliance; – Telecommunications end devices (1999/5/EC): EN301419-1, EN301511, Modul with GCF approval – Electromagnetic safety (1995/5/EG): EN 55022 Class B, EN 55024: EN 61000-6-2, EN 61000-4-[2/3/4/5/6/11], EN 61036 – Electrical safety (73/23/EWG): EN 60950-1 2006

MECHANICS

Mechanik	Enclosure: Standard enclosure for terminal cover mounting, three-point mounting acc. to DIN 43857-5, IP51, inflammability acc. to UL94-V0, sealable top cover for terminal block; Dimensions: Approx. 105 x 70 x 180 mm (L x W x H); Weight: Approx. 350 g
-----------------	--

MISCELLANEOUS

Accessories	Various antennas, software
Scope of Delivery	Device; Installation manual
Order Number	ZDUE-GSM-PLUS-V, Article No.: 819103 (with CL1 interface), Article No.: 819110 (without CL1 interface);

Subject to technical modification. All data are based on manufacturer's specifications. No guarantee or liability for incorrect entries or omissions. All deliveries and services are provided by Dr. Neuhaus Telekommunikation GmbH on the basis of the "General Terms and Conditions" in the current version. All product names are trademarks of their respective owners. Dr. Neuhaus Telekommunikation GmbH 04/2011, Doc.-No.: 8138AQ010 Rev. 2.2

