

### Benefits:

- Analog meter modem for transparent communications
- Easy device configuration with DIP switches or RS232 interface (local) or via telephone call (remote)
- Protection against unauthorized access
  - Local: Sealable enclosure
  - Remote: Call privileges with password
- Integrated auxiliary power source for quantity transformer, etc.

### Key Features:

- Integrated wide-area power supply 100 – 230 VAC
- Interfaces: CL1; RS232; RS485
- Time slot for call answer
- Integrated real-time clock with power reserves
- Auxiliary power source
- Operating mode display via LEDs
- Call authorization via password
- Transparent data reading of all devices connected
- Settings adjusted locally with DIP switches or RS232 interface or by remote by call up
- Firmware update locally via the RS232 interface
- Reset button



The ZDUE-MOD-PLUS-V from Dr. Neuhaus Telekommunikation GmbH enables remote data reading from electricity, water or gas meters via analog telephone landlines.

The data stored in the meter (e.g. register and load profile) are transmitted using transparent data via different interfaces. Thanks to the transparent mode, it is also possible to read gas registration devices, etc. With the integrated auxiliary power source, the ZDUE-MOD-PLUS-V can also supply such battery-operated devices as quantity transformers with power.

The device settings can be made either locally using the DIP switches or the RS232 interface as well as by remote by call up.

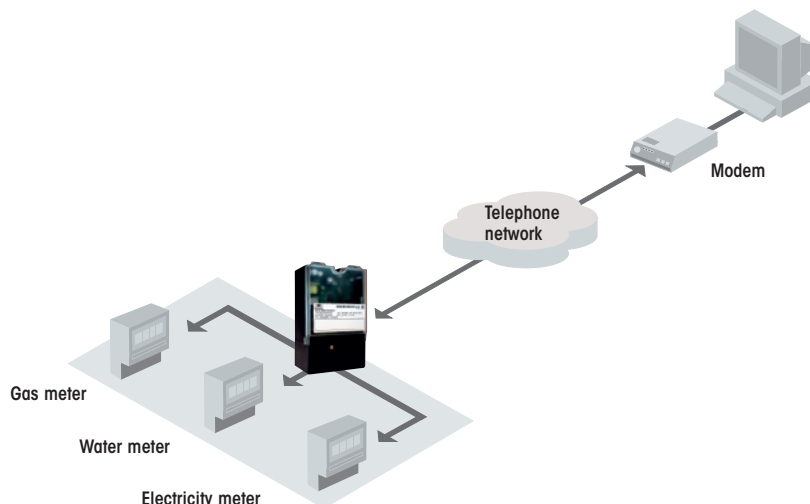
As a small enclosure, the ZDUE-MOD-PLUS-V is DIN 43857-5-compliant and can be easily installed on a meter board or on the meter terminal cover.



## System Components

- ZDUE-MOD-PLUS-V
- Analog telephone connection

## Topology



## Technical Data

### INTERFACE

<b>Meter interfaces</b>	CL1 – Interface as screw terminal compliant with DIN EN 62056-21: MODE A, C; Speed up to 19200 baud, half-duplex RS232 – Interface as RJ4P4C("RJ9"); Signals: Rx, Tx, GND, DCD; Speed up to 38400 baud, full-duplex RS485 – Interface 2-wire as screw terminal; Signals: RT+, RT-; max. 32 transceivers; Speed up to 19200 baud, half-duplex Data format 7E1, 8N1 or 8E1; Supports baud-rate switch acc. to DIN EN 62056-21 Mode C
<b>Configuration</b>	Basic configuration using DIP switches; basic configuration and extended configuration acc. to DIN EN 62056-21 Mode C: locally via RS232 meter interface, remote via call in
<b>Power Supply</b>	Input voltage device: Un 100 – 230 VAC (integrated wide-access power supply), Fn 50 Hz; Un 60 – 100 VDC
<b>Auxiliary power</b>	12 VDC / 100 mA

### CONNECTION

<b>Network</b>	Data transfer via telephone networks; modulation standards V.22, V.22bis, V.32, V.32bis (max. 14400 bps); Data backup: V.42; Data format: 8N1/7E1
<b>Behavior</b>	Independent answer for data connections; transparent connection to the end devices connected Password protection ready to activate; Password can be altered
<b>Line</b>	LINE as RJ12

### APPROVALS

<b>Environmental Conditions</b>	Operation -10 °C to +55 °C; humidity 0-95 %, non-condensing
<b>Approvals</b>	CE compliance; – Telecommunications end devices (1999/5/EC): ES 203 021-1,2,3 – Electromagnetic safety (1995/5/EG): EN 55022 Class B, EN 55024: EN 61000-4-2, -4-3, -4-4, -4-5, -4-6, -4-11; – Electrical safety (73/23/EWG): EN 60950

### MECHANICS

<b>Mechanics</b>	Enclosure: Standard enclosure for terminal cover mounting, three-point mounting acc. to DIN 43857-5, IP51, inflammability acc. to UL94-V0, sealable top cover for terminal block; Dimensions: Approx. 105 x 70 x 180 mm (L x W x H); Weight: Approx. 350 g
------------------	--

### MISCELLANEOUS

<b>Accessories</b>	Parameter cable, software
<b>Scope of Delivery</b>	Device; Installation manual; telephone cable
<b>Order Number</b>	ZDUE-MOD-PLUS-V, Article No.: 814818

Subject to technical modification. All data is based on manufacturer's specifications. No guarantee or liability for incorrect entries or omissions. All deliveries and services are provided by Dr. Neuhaus Telekommunikation GmbH on the basis of her "General Terms and Conditions" in his current version. All product names are trademarks of their respective owners. Dr. Neuhaus Telekommunikation GmbH 01/2009, Doc.-No.: 8148AQ010 Rev. 1.1

