

# Sagemcom



## Production

Your reliable production partner –  
individual production from  
electronic component assemblies to end devices

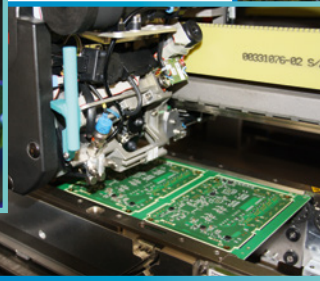
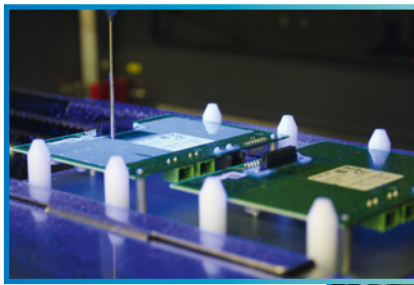
The production site of Sagemcom Dr. Neuhaus GmbH with more than 35 years of experience in the manufacture of electronic assemblies and devices is located in Rostock. Our many years of experience as a contract manufacturer with a broad spectrum of various services distinguish us as a reliable production partner. Starting from the technological support in the layout phase, over the production of the assemblies up to the dispatch of the finished product, we are at your disposal with our services and our know-how.

## Our qualification

- Certified according to:
  - DIN EN ISO 9001
  - DIN EN ISO 14001
  - DIN EN ISO 27001
  - EU Directive 2014/32/EU Annex D
  - Production according to IPC610 & 7711/7721

## Our capacity

- 3-shift operation from Monday to Sunday
- 10,000,000 SMD components per week
- 2 SMD lines (ASM Siplace)
- Short-term capacity expansions possible



## Your contact

Margit Sarcander | Project Manager Production | [margit.sarcander@sagemcom.com](mailto:margit.sarcander@sagemcom.com) | Phone: +49 381 7700 - 336  
Thomas Toschka | Project Manager Production | [thomas.toschka@sagemcom.com](mailto:thomas.toschka@sagemcom.com) | Phone: +49 381 7700 - 511

## Technical data

### CONNECTION TECHNOLOGY

- **Bonding:**
  - Adhesive stencil printing
  - Dispensers
- **Soldering:**
  - Full-tunnel double wave soldering under nitrogen
  - Reflow soldering under nitrogen
  - Selective soldering under nitrogen
- **Stencil printing:**
  - Stencil frames 585 x 585 mm
  - Print area approx. 450 x 450 mm (other sizes only after testing)
- **Coating:**
  - High speed coating, dam & fill, IR oven
- **Control:**
  - Highspeed 3D-AOI

### COMPONENTS

- **Designs:**
  - Fitting of all conventional components
  - Special designs, labels

- SMD chips from 0201
- ICs up to 55 mm
- Pitch clearance up to 0.35 mm
- BGA

- **Programming:**
  - PROM, EPROM, EEPROM, FLASH
  - PALs, GALs, EPLDs, microcontrollers
  - Special component adaptor procurable upon request
  - Gear and set programmers
  - Programming with Sprint Optima

### CIRCUIT BOARDS

- **Dimensions:**
  - Min. 100 x 135 mm
  - Max. 450 x 450 mm
  - Other sizes only after testing

All rights reserved. The information and specifications included are subject to change without prior notice. Sagemcom Energy & Telecom tries to ensure that all information in this document is correct, but does not accept liability for error or omission. Non contractual document. All trademarks are registered by their respective owners. Simplified joint stock company Capital 25 605 811.80 Euros - 518 250 337 RCS Nanterre - SIBR15-01.10.18 Sagemcom Dr. Neuhaus GmbH 02/2020, Flyer Production Rev. 7

## Sagemcom Dr. Neuhaus GmbH

Messestraße 20 b | 18069 Rostock | GERMANY  
Phone: +49 381 7700 - 511 | Fax: +49 381 7700 - 425  
Mail: [fertigung@neuhaus.de](mailto:fertigung@neuhaus.de)  
[www.sagemcom.com/neuhaus](http://www.sagemcom.com/neuhaus)

**Sagemcom**  
— Dr. NEUHAUS

## Key features

- Technological support
- SMD mounting (single and double-sided)
- Highspeed 3D-AOI
- Manual circuit board assembly (THT)
- Component preparation (incl. circuit board programming)
- Test services: in-circuit, function and climatic test
- Coating of component assemblies (conformal coating)
- Assembly & packing
- Shipment (e.g. directly to your customers incl. interim storage)
- Repair service
- Worldwide purchasing of components via an ERP-based material management system