

Sagemcom



ZDUE-LTE-PLUS-VII

Remote meter reading
via GPRS (2G) and LTE (4G)

The ZDUE-LTE-PLUS-VII from Sagemcom Dr. Neuhaus GmbH enables location-independent remote data readouts for energy, water or gas meters via the LTE (4G) and GPRS (2G) network. This technology enables a highly economical meter read out with very short intervals. The data collected at short, regular intervals can be used to calculate trends and thus optimize load or network management. Thanks to the integrated auxiliary voltage supply, this modem provides energy to external devices such as quantity transformers. Equipped with a compact enclosure according to DIN 43857-5, the ZDUE-LTE-PLUS-VII is designed to be mounted on a meter board or on the meter terminal cover.

- Reliable meter modem for transparent communication via mobile networks
- LTE (4G) and GPRS (2G) support for:
 - dynamic IP addresses (IP telemetry)
 - fixed IP
- Flexible meter integration
- Short reading intervals
- Protection against unauthorized access
- Diverse applications possible thanks to integrated auxiliary voltage supply (e.g. for quantity transformers)
- Easy device configuration using the RS232 interface (local) or remote by LTE or GPRS data connection
- International application thanks to quad-band GSM

System Components

- ZDUE-LTE-PLUS-VII
- Antenna
- SIM card (for LTE/GPRS operation using dynamic or fixed IP addresses)
- Communication software: TAINY SwitchingCenter
- Software modem control center: TAINY ComPortClient
- ZDUE Parameterization Software

Order Number

823001
823018

Product Variant

ZDUE-LTE-PLUS-VII
ZDUE-LTE-PLUS-VII - Fakra

Technical Data

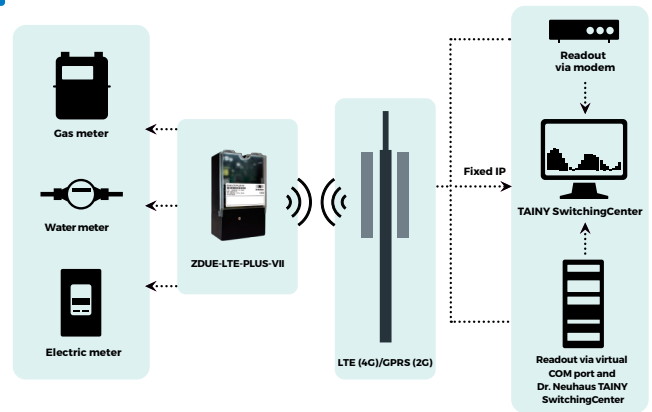
INTERFACE

- Meter interfaces: CL1 – Interface as screw-type terminal acc. to DIN EN 62056-21; MODE A, C; Speed: up to 19,200 baud, half-duplex; RS232 – Interface as RJ6/6; Signals: Rx, Tx, GND, DCD; Speed: up to 38,400 baud, full-duplex; RS485 – 2-wire Interface as screw-type terminal; Signals: RT+, RT-; max. 32 transceivers; Speed: up to 19,200 baud, half-duplex; Data format 7E1 (meter mode), 8N1 or 8E1; supports baud-rate switch acc. to DIN EN 62056-21 Mode C
- Configuration: Firmware update, basic configuration and expanded configuration acc. to DIN EN 62056-21 Mode C; locally via RS232 meter interface, remote by LTE / GPRS data connection
- Power supply: Input voltage for device:
 - Un 100–230 VAC ±10%; Fn 50 Hz
 - Un 60–100 VDC ±10%
- Auxiliary power: 9 VDC / 100 mA

RADIO

- Connection: GPRS 900Hz / 1800 Hz / Support GPRS multi-slot class 33 (33 by default)
LTE CAT-1; bands B1/ B3/ B7/ B8/ B20/ B28A
- Transmitting Power (antenna port): Class 4 (max. 33dBm±2dB) for EGSM900; Class 1 (max. 30dBm±2dB) for DCS1800; Class E2 (max. 27dBm±3 dB) for EGSM900 8-PSK; Class E2 (max. 26dBm±3 dB) for DCS1800 8-PSK; (Class 3 (max. 24dBm+1 / -3 dB) for WCDMA bands); Class 3 (max. 23dBm±2dB) for LTE-FDD bands

Topology



Key Features

- Transparent communication via LTE and GPRS connections
- Meter interfaces: CL1, RS232, RS485
- Supports the IP-T protocol (DIN 43863-4)
- Supports IP server mode (fixed IP)
- Integrated wide-range power supply for 100 – 230 VAC ±10 %
- Auxiliary voltage supply
- Display for operating mode and field strength via LED
- Sealable enclosure
- Access with password protection
- Local parameterization via the RS232 interface or remote by LTE or GPRS data connection
- Firmware update locally and remote

CERTIFICATION

- Environmental Conditions: Operation from -20 °C to +55 °C; +55 °C to +65 °C (derating); -25 °C to +85 °C (storage); Humidity 0-95%, non-condensing
- Approvals: CE-Konformität nach RED (2014/53/EU), ROHS (2011/65/EU); Effective usage of radio frequencies: EN 301 511; EN 301 908-1; EN 301 908-2; EN 301 908-13; electromagnetic compatibility: EN 301 489-1; EN 301 489-52; EN 55032; EN 61000-6-2; EN 55024; electrical safety: EN 62368-1; health safety: EN 62479

MECHANICS

- Mechanics: plastic housing acc. to DIN 43861-2 for three-point mounting acc. to DIN 43857-5; sealable; protection class acc. to DIN EN 60529: IP51; combustibility class acc. to UL94-V0; dimensions (L x W x H): 180 mm x 105 mm x 73 mm; weight: 320 g

MISCELLANEOUS

- Accessories: Various antennas, software
- Scope of Delivery: Device; installation instructions

All rights reserved. The information and specifications included are subject to change without prior notice. Sagemcom Energy & Telecom tries to ensure that all information in this document is correct, but does not accept liability for error or omission. Non contractual document. All trademarks are registered by their respective owners. Simplified joint stock company Capital 25 605 811.80 Euros - 518 250 337 RCS Nanterre - SIBR15-01.10.18 Sagemcom Dr. Neuhaus GmbH 02/2021, Doc.-No.: 8230AQ002 Rev. 1.3

Sagemcom Dr. Neuhaus GmbH

Papenreya 65 | 22453 Hamburg | GERMANY

Phone: +49 40 55304 - 0 | Fax: +49 40 55304 - 180

Mail: vertrieb@neuhaus.de

www.sagemcom.com/neuhaus

Sagemcom
— Dr. NEUHAUS