

Sagemcom



ZDUE-MOD-PLUS-V

Sagemcom

— Dr. NEUHAUS

S.-No.: 12345678/xx/xxxx

Article No.: 814818

100-230VAC

35-19mA; 50Hz

HW DNT8148/1.4



Sagemcom Dr. Neuhaus GmbH • Papenreihe 6a • D-22453 Hamburg

ZDUE-MOD-PLUS-V

Remote Meter Reading
via Analog Connection

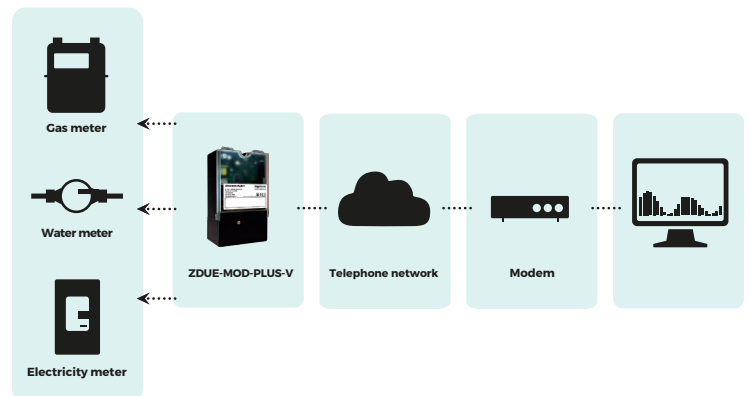
The ZDUE-MOD-PLUS-V from Sagemcom Dr. Neuhaus GmbH enables remote data reading from electricity, water or gas meters via analog telephone landlines. The data stored in the meter (e.g. register and load profile) are transmitted using transparent data via different interfaces. Thanks to the transparent mode, it is also possible to read gas registration devices, etc. With the integrated auxiliary power source, the ZDUE-MOD-PLUS-V can also supply such battery-operated devices as quantity transformers with power. The device settings can be made either locally using the DIP switches or the RS232 interface as well as by remote by call up. As a small enclosure, the ZDUE-MOD-PLUS-V is DIN 43857-5-compliant and can be easily installed on a meter board or on the meter terminal cover.

- Analog meter modem for transparent communications
- Easy device configuration with DIP switches or RS232 interface (local) or via telephone call (remote)
- Protection against unauthorized access
 - Local: Sealable enclosure
 - Remote: Call privileges with password
- Integrated auxiliary power source for quantity transformer, etc.

System Components

- ZDUE-MOD-PLUS-V
- Analog telephone connection

Topologie



Order Number

814818

Product Variant

ZDUE-MOD-PLUS-V

Key Features

- Integrated wide-area power supply 100 – 230 VAC
- Interfaces: CL1; RS232; RS485
- Time slot for call answer
- Integrated real-time clock with power reserves
- Auxiliary power source
- Operating mode display via LEDs
- Call authorization via password
- Transparent data reading of all devices connected
- Settings adjusted locally with DIP switches or RS232 interface or by remote by call up
- Firmware update locally via the RS232 interface
- Reset button

Technical Data

INTERFACE

- Meter interfaces: CL1 – Interface as screw terminal compliant with DIN EN 62056-21: MODE A, C; Speed up to 19200 baud, half-duplex; RS232 – Interface as RJ4P4C(“RJ9”); Signals: Rx, Tx, GND, DCD; Speed up to 38400 baud, full-duplex; RS485 – Interface 2-wire as screw terminal; Signals: RT+, RT-; max. 32 transceivers; Speed up to 19200 baud, half-duplex; Data format 7E1, 8N1 or 8E1; Supports baud-rate switch acc. to DIN EN 62056-21 Mode C
- Configuration: Basic configuration using DIP switches; basic configuration and extended configuration acc. to DIN EN 62056-21 Mode C; locally via RS232 meter interface, remote via call in
- Power Supply: Input voltage device: Un 100 – 230 VAC (integrated wide-access power supply), Fn 50 Hz; Un 60 – 100 VDC
- Auxiliary power: 9 VDC / 100 mA

CONNECTION

- Network: Data transfer via telephone networks; modulation standards V.22, V.22bis, V.32, V.32bis (max. 14400 bps); Data backup: V.42; Data format: 8N1/7E1
- Behavior: Independent answer for data connections; transparent connection to the end devices connected Password protection ready to activate; Password can be altered
- Line: LINE as RJ12

Approvals

- Environmental Conditions: Operation -10 °C to +55 °C; humidity 0-95 %, non-condensing
- Approvals: CE compliance; Electromagnetic compatibility (2014/30/EU): EN 55032 class B, EN 55035, EN 61000-4-2, -4-3, -4-4, -4-5, -4-6, -4-11; Electrical safety (2014/35/EU): EN 62368-1; ROHS (2011/65/EU): EN 63000

Mechanics

- Enclosure: Standard enclosure for terminal cover mounting, three-point mounting acc. to DIN 43857-5, IP51, inflammability acc. to UL94-V0, sealable top cover for terminal block; Dimensions: Approx. 105 x 70 x 180 mm (L x W x H); Weight: Approx. 350 g

Miscellaneous

- Accessories: Parameter cable, software
- Scope of Delivery; Device; Installation manual; telephone cable

All rights reserved. The information and specifications included are subject to change without prior notice. Sagemcom Energy & Telecom tries to ensure that all information in this document is correct, but does not accept liability for error or omission. Non contractual document. All trademarks are registered by their respective owners. Simplified joint stock company Capital 25 605 811.80 Euros - 518 250 337 RCS Nanterre - SIBR15-01.10.18 Sagemcom Dr. Neuhaus GmbH 03/2023, Doc.-No.: 8148AQ010 Rev.1.4

Sagemcom Dr. Neuhaus GmbH

Papenreya 65 | 22453 Hamburg | GERMANY

Phone: +49 40 55304 - 0 | Fax: +49 40 55304 - 180

Mail: neuhaus.sales@sagemcom.com

<https://www.sagemcom.com/neuhaus>

Sagemcom
— Dr. NEUHAUS