

# Sagemcom

## XS212

Single Phase Smart Energy Meter



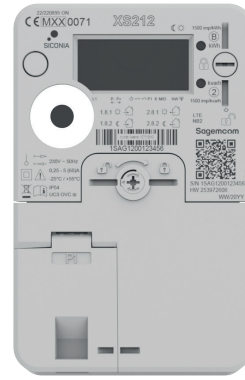
  
**SICONIA**<sup>®</sup>  
Elec

- Cellular communication  
LTE Cat M / NB1 / NB2
- Automatic Switch Cat M / NB1 / NB2
- eSIM MFF2 eUICC
- Last Gasp & Neutral current measurement
- DLMS Security suite 0 or 1 or 2
- Multi-energy : WMBUS 868 MHz

SPECIFICATIONS		
Basic Features	<b>Voltage:</b>	230V
	<b>Maximum current:</b>	60A or 80A or 100A
	<b>Max switching current per phase:</b>	80A or 100A or 120A
	<b>Frequency:</b>	50 Hz +/- 3 Hz (6%)
	<b>Active Energy:</b>	EN50470-3 Class B
	<b>Reactive Energy:</b>	IEC 62053-23 Class 2
	<b>Quadrants:</b>	Q1 / Q2 / Q3 / Q4, Import / Export Energy
	<b>Real Time Clock:</b>	Supercap: 15 years / 15 day <b>OR</b> Battery 3 years
	<b>Lifetime:</b>	> 15 years
Environment	<b>Operating temperature:</b>	-40°C / + 70°C
	<b>Humidity:</b>	< 95%
	<b>Protection Index:</b>	IP 54
	<b>Fire protection:</b>	5-VB (UL94)
Customer Interaction	<b>Display:</b>	LCD: Dot matrix 5 x 8 Digit Size: 7x3 mm Symbols: 48 (3 lines of 16) Scrolling: auto and manual Backlight: option, remotely configurable
	<b>LEDs:</b>	1 for Active Energy 1 for Reactive Energy
	<b>Push Buttons:</b>	Main button for scrolling

MECHANICAL CHARACTERISTICS	
<b>Sealing method:</b>	Top cover and bottom cover are sealed together by ultrasonic welding. The terminal block cover is sealed by one dedicated screw and metallic ferrule.
<b>Connection diagram:</b>	DIN 43856
<b>Mounting:</b>	DIN 43857
<b>Cable size:</b>	4 – 35 mm <sup>2</sup>
<b>Terminal Screws</b>	2 screws M6 (Pozidrive) or 1 screw M8 (Pozidrive)
<b>Size (H*W*D)</b>	205 x 130 x 82 mm (incl. 50mm free space)

INTERFACES		
Integrated communication interfaces	<b>Maintenance interface:</b>	Optical port (IEC 62056-31)
	<b>HAN customer interface:</b>	P1 DSMR 5.0.2 or RJ45/RS485
Switches	<b>Cellular Modem:</b>	LTE Cat M & NB2/NB1 (NB IoT) or LTE Cat-1 Band 3, 8, 20 Embedded Modem and internal antenna. SMA connector for external antenna
	<b>1 Auxiliary Relay</b>	Monotable 3A/230V



## Technical features

### TIME OF USE

- Programmable Load profiles: capture list / capture COSEM objects / capture period
- Programmable Billing profiles: capture list / capture COSEM objects / capture period
- Tariff management via built-in programmable output relay  
Calendar/Time of Use management

### POWER QUALITY & LTE MONITORING

- Voltage Interruptions (Power down)
- Voltage Restoration (Power Up)
- Power Supply Quality
- Last Gasp
- LTE Monitoring Profile

### SECURITY, INTEGRITY AND VERIFICATION

- DLMS Security suite 0 or 1 or 2
- Auto diagnostic
- Calibration mode
- Data Storage strategy for integrity
- Local access to the meter by DLMS authentication Password (via the optical port)

### FIRMWARE AND LOAD MANAGEMENT

- Load Disconnection: locally and remotely
- Local and remote Firmware upgrade

### FRAUD DETECTION

- Magnetic field Detection
- Magnetic field immunity
- Top Cover and Terminal block cover opening/closing detection
- Input - output swap detection
- Phase - Neutral swap detection
- Mains power cut detection
- Power factor variation detection

### CERTIFICATION

- MID Directive 2014/32/EU and the Radio Equipment Directive (RED) 2014/53/EU
- CE Declaration
- DLMS CTT V3.0
- LTE CATM / LTE CAT NB2/NB1 (NB-IoT)
- RED
- UC3 (breaker) EN 62055-31
- DLMS Security suite 0 or 1 or 2
- Local/Country Certification on demand

*Note: this list of functionalities is not exhaustive. Deeper features list and Security detail can be delivered on special demand under Non-Disclosure Agreement (NDA).*

### CORE ARCHITECTURE

High speed future proof Cortex™-M4 core microprocessor, integrating crypto/hash processor providing hardware acceleration for AES 128, 192, 256, Triple DES, and hash (MD5, SHA-1) and supporting BSI crypto standard.

All rights reserved. The information and specifications included are subject to change without prior notice. Sagemcom Energy & Telecom tries to ensure that all information in this document is correct, but does not accept liability for error or omission. Non contractual document. All trademarks are registered by their respective owners. Simplified joint stock company Capital 36 626 034,60 Euros - 518 250 337 RCS Nanterre. 11/2023

Sagemcom Energy & Telecom SAS

Headquarters : 4 Allée des Messageries

92270 Bois-Colombes - FRANCE

Tel : +33 (0)1 57 61 10 00 - Fax : +33 (0)1 57 61 10 01

www.sagemcom.com

**Sagemcom**