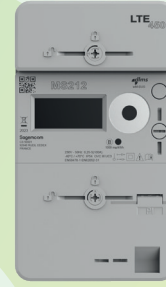


Sagemcom

MS212 LTE 450



- Support private 450/410 MHz bands
- Modular radio cellular interface
- Interoperability on sub-metering interface
- Power quality measurements
- Anti-tamper functionalities
- Last gasp feature



BASIC FUNCTIONALITIES

Display	<ul style="list-style-type: none"> • Dot matrix 5x8 LCD • 3-line display • Auto and manual scrolling • Backlight
Metrology LED	<ul style="list-style-type: none"> • 1 for Active Energy • 1 optional for Reactive Energy
Buttons	<ul style="list-style-type: none"> • 1 for display control • 1 sealable for M-Bus binding
Installation/Maintenance	Optical port IEC 62056-31
Communication module	<ul style="list-style-type: none"> • LTE-M/NB-IoT modem • Public and 450/410 MHz private bands
Customer port	DSMR5.0 P1 interface

MECHANICAL CHARACTERISTICS

Sealing method: Top cover and bottom cover are sealed by ultrasonic welding. The terminal block cover is sealed by one screw.	
Dimensions	230 x 135 x 76 mm
Connection diagram:	DIN
Cable size:	4 – 35 mm ²

SPECIFICATIONS

Electrical characteristics	Network	1-phase
	Voltage	$U_n = 230 \text{ V}$
	Current	$I_{ref} = 5 \text{ A}$ $I_{max} = 100 \text{ A}$
	Accuracy	EN 50470-3 Class B IEC 62053-21 Class 1
	Frequency	$f_n = 50 \text{ Hz}$
Environmental conditions	Operating temperature	-40°C to + 70°C
	Operating humidity	≤ 95% at +40°C
	IP class	IP54 IEC 60529 IK02 EN 50102
	Protective class	Class II
	Fire protective class	5-VB

CERTIFICATIONS/STANDARDS

CE and IEC Declaration
MID Directive 2014/32/EU
Radio Equipment Directive (RED) 2014/53/EU
NBNL Additional EMC Requirements Dutch Electricity Meters
DLMS Green book 9 and DLMS Blue book 13
Open to specific local/country standards

FRAUD DETECTION

Magnetic Field Detection and Immunity
Reverse flow
Local programming
Terminal cover opening/closing
Top cover opening/closing

All rights reserved. The information and specifications included are subject to change without prior notice. Sagemcom Energy & Telecom tries to ensure that all information in this document is correct, but does not accept liability for error or omission. Non contractual document. All trademarks are registered by their respective owners. Simplified joint stock company Capital 36 626 034,60 Euros - 518 250 337 RCS Nanterre. 11/2023

Sagemcom Energy & Telecom SAS

Headquarters : 4 Allée des Messageries

92270 Bois-Colombes - FRANCE

Tel : +33 (0)1 57 61 10 00 - Fax : +33 (0)1 57 61 10 01

www.sagemcom.com

Sagemcom