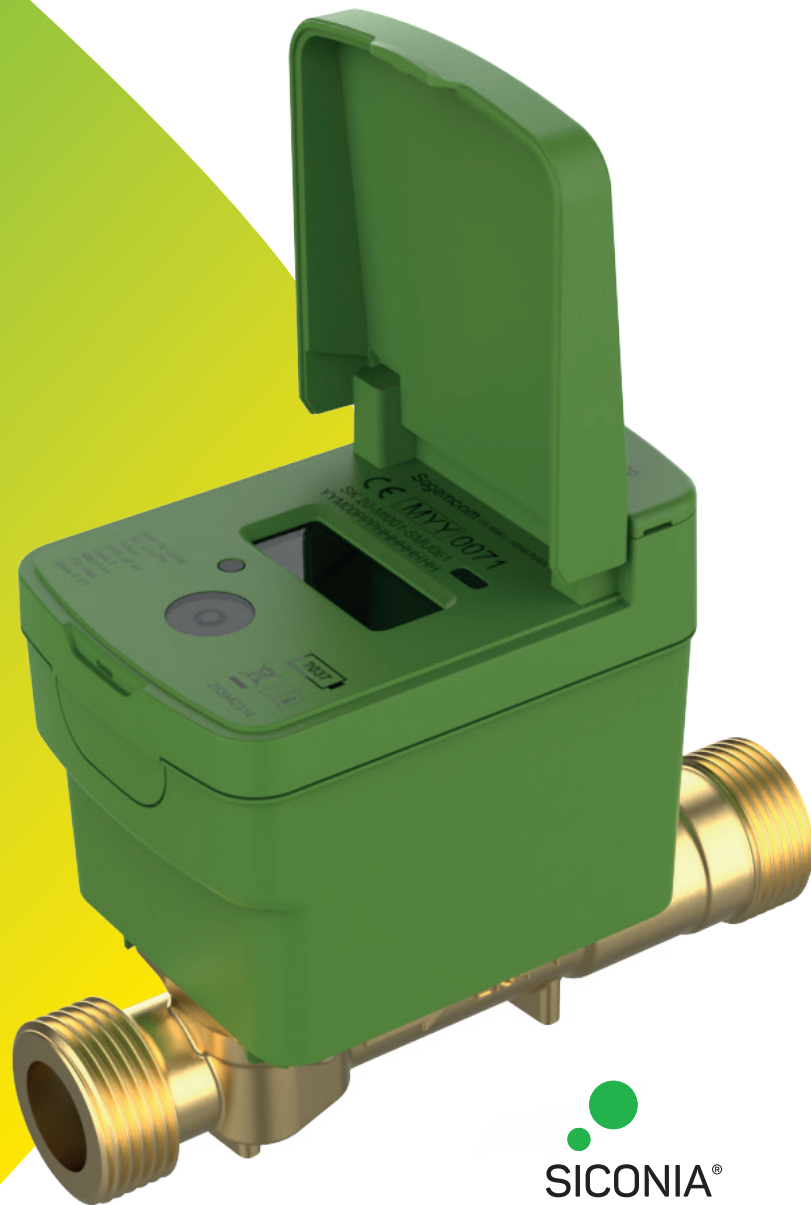


Sagemcom



Siconia® WATER WM with optional Integrated Pressure Sensor

A solution for efficient remote management
of cold water consumption and distribution
network management for water utilities

Siconia® technology offers a wide range of **ultrasonic smart water meters** to monitor and manage water use in **residential and industrial** applications, with very high accuracy and a measurement **error curve very close to 0%**. The removal of all mechanical moving parts inside the meter results in water with no mechanical wear phenomenon and therefore **greater stability of metrology** quality over time.

Siconia® technology is also a new step towards edge computing and data analytics: it offers the **first smart meter with integrated accelerometer and pressure sensors** that provide information on the quality of the water supply service. With Siconia® technology, water utilities can monitor the pressure of the water delivered to the distribution point and may predict the maintenance on their water distribution grid/network.

Technical features

METROLOGY

- Nominal diameter (mm): DN20
- Nominal flow rate: Q3 (m³/h): 4,0
- Minimum flow rate: from 2 l/h
- MID accuracy ratio (Q3/Q1): R400
- Pipe material: DZR lead-free brass
- Pipe length: 154 mm
- Nominal pressure: 16 bars
- Class of T²: T50
- Measuring frequency: 2 Hz
- Optionally up to 8 Hz
- Pressure loss: ΔP63
- Mounting in any position (H, V, H/V)
- Sensitive class: U0/D0
- Non-Reversing Device: Dual check valve

TECHNICAL CERTIFICATIONS

- NMI - R49
- ACMA RCM compliance
- Watermark certification
- AS3565.1-2010
- AS4020

COMMUNICATION



- NB-IoT procol - Band 3*, 5*, 8*, 20*, 28
- *future versions
- Release 13 and 14
- DLMS COSEM (possible alternative available)
- Optional external antenna

ENERGY CONSUMPTION

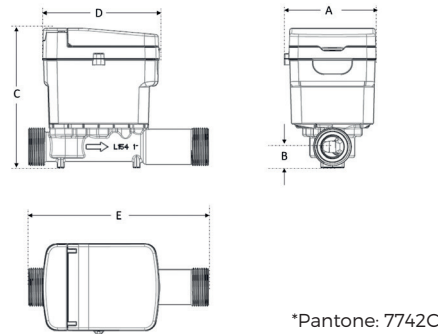
- Lithium battery
- Up to 15 years lifetime*

ENVIRONMENT

- Protection class IP68
- Environmental Class: Class O
- Electromagnetic Environment: E1

* Depends on radio configuration, associated data model and environmental conditions

Dimensions

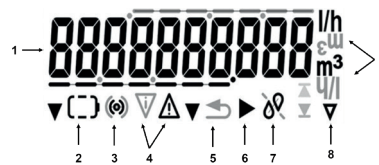


Siconia® - WM - AUS	
Q3 = 4 m ³ /h	
32.50 x 14TPI Whitworth form	
A	78.4 mm
B	18 mm
C	119.3 mm
D	106.6 mm
E	154 mm

New feature - LCD Display

The complete range of Siconia® Water WM meters offer an LCD display. With its ten digits (7+3), it is well above the requirements of the AS 3565.1 specification.

Thanks to embedded accelerometer, this range of meter includes auto tamper and reverse feature when installed in a vertical pipe.



1	The measured volumes are indicated in m ³ , associated with 3 decimal places giving an indication in liters
2	Battery level information
3	RF status information
4	One or more events/alerts are currently active
5	Backflow situation
6	Active flow through the meter
7	Pipe is not filled with water
8	MID certified information

New feature - Pressure sensor (option)

With the new Sagemcom solution, it is possible to have a product with an integrated pressure sensor that enables to :

- Check if SLA about level of water pressure at customer premises is achieved
- Monitor the water grid by collecting data on a daily basis and then by analysing collected information

* This datasheet is generic and does not describe exhaustively all specifications of the meter

All rights reserved. The information and specifications included are subject to change without prior notice. Sagemcom Energy & Telecom tries to ensure that all information in this document is correct, but does not accept liability for error or omission. Non contractual document. All trademarks are registered by their respective owners. Simplified joint stock company Capital 36 626 034.60 Euros - 518 250 337 RCS Nanterre. 11/2023

Sagemcom Energy & Telecom SAS

Headquarters : 4 Allée des Messageries

92270 Bois-Colombes - FRANCE

Tel : +33 (0)1 57 61 10 00 - Fax : +33 (0)1 57 61 10 01

www.sagemcom.com

Sagemcom