

Sagemcom



Siconia® WATER Meter for US market

A solution for efficient remote management
of cold water consumption for water companies

The use of an **ultrasonic metrology technology** allows to eliminate all mechanical moving parts inside the meter and therefore no longer have any mechanical wear phenomenon that would modify the quality of the metrology over time.

Siconia® technology offers a wide range of ultrasonic smart water meters to control, monitor and manage water use in **residential and industrial** environments.

The Siconia® Water metrological unit offers a wide range of measurements, with very high accuracy and a metering **error very close to 0%**. As it remains stable throughout the life of the meter, the information on the water distribution is reliable and the water balance of the network **can be checked daily**, making it **easier to detect leaks** in the network pipes.

Technical features

METROLOGY

- Nominal diameter (mm): DN20
- Nominal flow rate: 25 gpm (95 lpm)
- Minimum flow rate: 0.1 gpm (0.4 lpm)
- Max operating pressure: 175 PSI (12 bar)
- Measuring frequency: 2 to 8 Hz
- Mounting in any position (H, V, H/V)
- Sensitive class: U0/D0
- Class of T°: T50
- Pipe in composite: 190 mm, 273 mm

TECHNICAL CERTIFICATIONS

- FCC certification (ongoing)
- UL certification (ongoing)

DRINKING WATER CERTIFICATIONS

- NSF/ANSI 61 & 372 (ongoing)

COMMUNICATION



- Data logger (36 months capacity)
- Data security (AES128 encryption)

EDGE ADVANCED COMPUTING SERVICES

- Leak detection
- Anti-forgery logs and alarms
- Water quality management - backflow detection

USAGE

- Ultrasonic meter for residential and industrial use

ENERGY

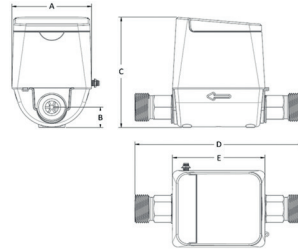
- Lithium Thionyl Chloride battery
- More than 10 years lifetime*

ENVIRONMENT

- Protection class IP68
- Operating Humidity: 0 to 99%
- Operating temperature 0 - 70°C

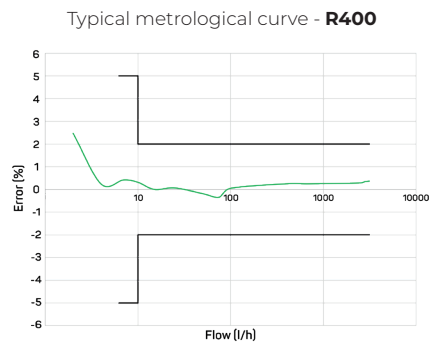
*Depends on radio configuration, associated data model and environmental conditions

Dimensions



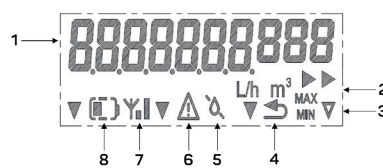
	Siconia® UM20	
	Siconia 5/8"x 3/4"	Siconia 1"
A (Box width)	90.2 mm	90.2 mm
B (Height)	24 mm	22 mm
C (Pipe length)	130.3 mm	130.3 mm
D (Total length)	190 mm	273 mm
E (Box length)	104.6 mm	104.6 mm
Thread	NPSM 1"	NPSM 1 1/4"
Weight	1007 g	1069 g

Typical error and pressure loss



LCD Interface

The complete range of Siconia®Water WM meters offers an LCD display. With its nine digits (9), it is well above the requirements of the MID specification.



1	The measured volumes are indicated in gal, m ³ and ft ³ and flows in gal/mn and l/h.
2	Animated icons showing when there is an active flow through the meter
3	MID certified information
4	The counter is in a backflow situation
5	The water line is not filled with water
6	One or more events/alarms are currently active
7	RF status information
8	Battery level information

All rights reserved. The information and specifications included are subject to change without prior notice. Sagemcom Energy & Telecom tries to ensure that all information in this document is correct, but does not accept liability for error or omission. Non contractual document. All trademarks are registered by their respective owners. Simplified joint stock company Capital 36 626 034,60 Euros - 518 250 337 RCS Nanterre. 11/2023

Sagemcom Energy & Telecom SAS

Headquarters : 4 Allée des Messageries

92270 Bois-Colombes - FRANCE

Tel : +33 (0)1 57 61 10 00 - Fax : +33 (0)1 57 61 10 01

www.sagemcom.com

Sagemcom