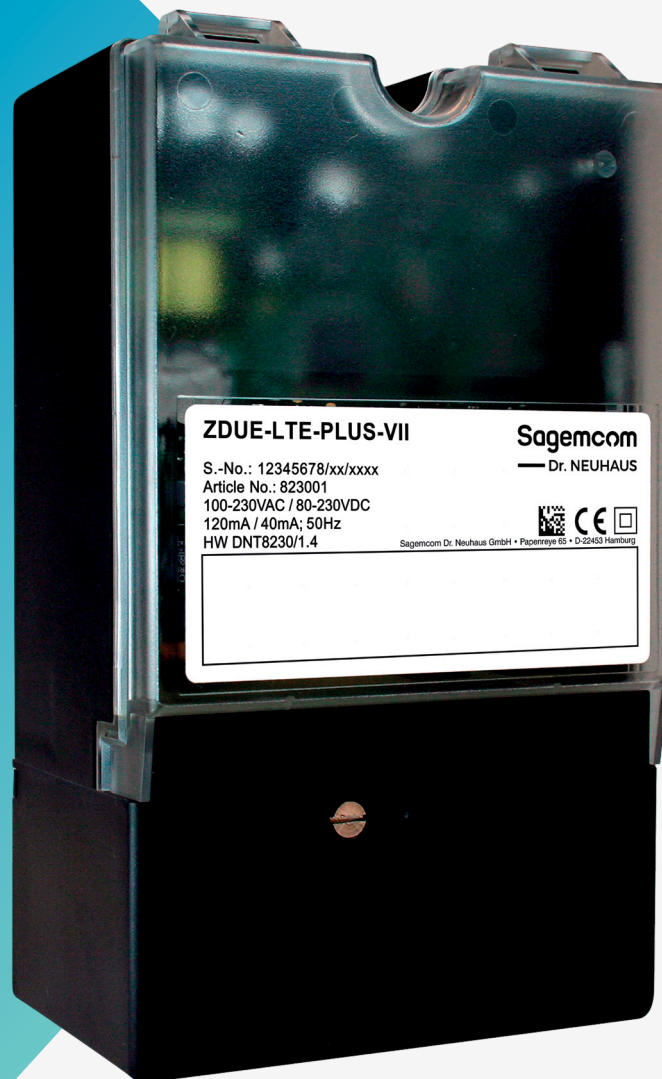


# Sagemcom



**ZDUE-LTE-PLUS-VII**

**Sagemcom**

— Dr. NEUHAUS

S.-No.: 12345678/xx/xxxx  
Article No.: 823001  
100-230VAC / 80-230VDC  
120mA / 40mA; 50Hz  
HW DNT8230/1.4



Sagemcom Dr. Neuhäusl GmbH • Papenburg 43 • D-26453 Harenburg

## ZDUE-LTE-PLUS-VII

Remote meter reading  
via GPRS and LTE

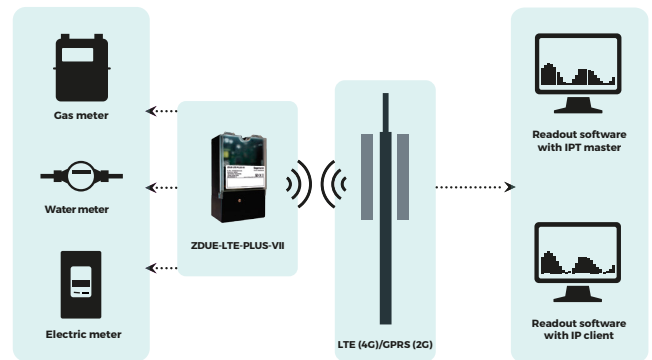
The ZDUE-LTE-PLUS-VII from Sagemcom Dr. Neuhaus GmbH enables remote data reading of energy, water or gas meters via LTE/GPRS networks regardless of location. In this way, meter readings can be retrieved economically at very short intervals. The data obtained in a timely manner can be used, for example, for trend calculations and thus optimize load or grid management. The ZDUE-LTE-PLUS-VII can supply power to external devices such as volume converters via the integrated auxiliary voltage source. The ZDUE-LTE-PLUS-VII is designed to be mounted on a meter panel or meter terminal cover in accordance with DIN 43857-5.

- Reliable meter modem for transparent communication over mobile networks
- LTE/GPRS support for:
  - dynamic IP addresses (IP telemetry)
  - fixed IP
- Flexible meter integration
- Short readout intervals
- Protection against unauthorized access
- Versatile applications due to integrated auxiliary voltage source (e.g. for volume converters)
- Easy configuration of the device via RS232 interface (local) or remotely via LTE or GPRS data connection

## System Components

- ZDUE-LTE-PLUS-VII
- Antenna
- SIM card (for LTE/GPRS operation with dynamic or fixed IP address)
- Readout software with IPT master
- Readout software with IP client
- ZDUE parameterization tool

## Topology



## Key Features

- Transparent communication via GSM and GPRS connections
- Meter interfaces: CL1, RS232, RS485
- Supports IP-T protocol DIN 43863-4
- supports IP server mode (fixed IP)
- Integrated wide-range power supply 100 – 230 VAC
- Auxiliary power source
- Display of operating status and GSM field strength via LED
- Sealable housing
- Call authorization with password protection
- Parameterization locally via RS232 interface or remotely via LTE- or GPRS data connection
- Firmware update locally and remotely

## Order Number

823001  
823018

## Product Variant

ZDUE-LTE-PLUS-VII  
ZDUE-LTE-PLUS-VII - Fakra

## Technical Data

### INTERFACE

- Interface to meters: CL1-interface as screw terminal according to DIN EN 62056-21; MODE A, C; speed: up to 19.200 Baud, half duplex; RS232-interface as RJ45; signals Rx, Tx, GND, DCD; speed: up to 38.400 Baud, full duplex; RS485-interface 2-wire as screw terminal; signals RT+, RT-; max. 32 transejver; speed: up to 19.200 Baud, half duplex; data format 7E1 (meter mode), 8N1 or 8E1; supports Baud rate switching according to DIN EN 62056-21 Mode C
- Configuration: Firmware update, basic configuration and extended configuration according to DIN EN 62056-21 Mode C; locally via meter interface RS232, remote via LTE- or GPRS data connection
- Power supply: Input voltage device:  
Un 100 – 230 VAC ± 10 %; Fn 50 Hz  
Un 80 – 230 VDC ± 10 %
- Auxiliary supply: 9 VDC / 100 mA

### RADIO

- Connection: GPRS 900 Hz / 1800 Hz / support GPRS multi-slot class 33 (33 by default) LTE CAT-1; bands B1/ B3/ B7/ B8/ B20/ B28A
- Power (on the antenna socket): Class 4 (max. 33 dBm±2 dB) for EGSM900; Class 1 (max. 30 dBm±2 dB) for DCS1800; Class E2 (max. 27 dBm±3 dB) for EGSM900 8-PSK; Class E2 (max. 26 dBm±3 dB) for DCS1800 8-PSK; (Class 3 (max. 24 dBm+1 / -3 dB) for WCDMA bands); Class 3 (max. 23 dBm±2 dB) for LTE-FDD bands

### CERTIFICATION

- Environment: operation -20°C up to +55°C; +55°C up to +65°C (restricted); -25°C up to +85°C (storage); humidity 0-95%, non-condensing
- Examination / Admission: CE conformity according to RED (2014/53/EU), ROHS (2011/65/EU); effective use of radio frequencies: EN 301 511; EN 301 908-1; EN 301 908-2; EN 301 908-13; electromagnetic compatibility: EN 301 489-1; EN 301 489-52; EN 55032; EN 61000-6-2; EN 55035; electrical safety: EN 62368-1; protection of health: EN 62479.

### MECHANICS

- Mechanics: Small plastic housings according to DIN 43861-2 for three-point mounting according to DIN 43857-5; sealable; degree of protection according to DIN EN 60529; IP51; flammability class: UL94-V0; dimensions (L x B x H); 180 mm x 105 mm x 73 mm, weight: 320 g.

### OTHERS

- Accessories: Various antennas, software
- Scope of Delivery: Device; installation instructions

All rights reserved. The information and specifications included are subject to change without prior notice. Sagemcom Energy & Telecom tries to ensure that all information in this document is correct, but does not accept liability for error or omission. Non contractual document. All trademarks are registered by their respective owners. Simplified joint stock company Capital 36 626 034,60 Euros - 518 250 337 RCS Nanterre - SIBR15-01.10.18 Sagemcom Dr. Neuhaus GmbH 03/2024, Doc.-No.: 8230AQ002 Rev. 1.4

Sagemcom Dr. Neuhaus GmbH

Papenreya 65 | 22453 Hamburg | GERMANY

Phone: +49 40 55304 - 0 | Fax: +49 40 55304 - 180

Mail: [vertrieb@neuhaus.de](mailto:vertrieb@neuhaus.de)

[www.sagemcom.com/neuhaus](http://www.sagemcom.com/neuhaus)

**Sagemcom**  
— Dr. NEUHAUS